

PRODUCT LIST 2023 (part 2)

ICE CREAM DELIVERY & STORAGE CONTAINERS

1. CLASIC EPS CONTAINERS



TROPIC



KA

A. SERIES TROPIC (kg)

Code	Capacity (ml & gr)	Inside dimensions (cm)	Pieces/ carton	Cartons/ pallet	€ / pcs	€ /pcs to buy a pallet
TROPIC-3.5	350gr (500ml)	16.8 x 8.9 x 7.1	50	36		
TROPIC-5.0	500gr (750ml)	18.5 x 10.2 x 7.5	50	30		
TROPIC-7.5	750gr (1000ml)	21.3 x 11.1 x 9.0	50	24		
TROPIC-10	1000gr (1500ml)	23.5 x 12.8 x 9.4	50	24		
TROPIC-15	1500gr (2250ml)	28.0 x 14.0 x 8.0	30	18		

Its interior is heat-welded to the container by the manufacturing process.

B. SERIES KA – (kg - Only for pallet)

Code	Capacity (ml & gr)	Pieces/ carton	Cartons/ pallet	€ /pcs to buy a pallet
KA-350	350 gr (450 ml)	50	36	
KA-500	500 gr (690 ml)	50	30	
KA-750	750 gr (950 ml)	50	24	
KA-1000	1000 gr (1360 ml)	50	24	
KA-1500	1500 gr (2050 ml)	30	12	

C. SERIES T – (kg - Only for pallet)



Code	Capacity (ml & gr)	Pieces/ carton	Cartons/ pallet	€ /pcs to buy a pallet
T-500	350 gr (520 ml)	100	18	
T-750	600 gr (825 ml)	100	18	
T-1000	750 gr (925 ml)	100	12	
T-1500	1000 gr (1460 ml)	100	12	

D. SERIES DIAMOND



Material: White EPS + PS

Temperature limits: -30 °C to +40 °C

Code	Capacity (ml & gr)	Inside dimensions (cm)	Pieces/ carton	Cartons/ pallet	€ / pcs	€ /pcs to buy a pallet
KT-0.5	500 gr (650 ml)	16 x 14 x 9.5	90	30		
KT-0.75	750 gr (950 ml)	18 x 15.5 x 11	72	30		
KT-1	1000 gr (1300 ml)	20 x 16.5 x 12	60	30		
KT-1.5	1500 gr (1950 ml)	23 x 18 x 14	48	30		

2. BIODEGRADABLE SPECIAL EPS CONTAINERS

2.1 BIODEGRADABLE TRAPEZOID TYPE



Code	Capacity (ml & gr)	Inside dimensions (cm)	Pieces/ carton	Cartons/ pallet	€ / pcs	€ /pcs to buy a pallet
GR350BIO	350 gr (440 ml)	18.6 x 10.7 x 6.7	50	40		
GR500BIO	500 gr (630 ml)	20.5 x 12.1 x 8.1	50	30		
GR750BIO	750 gr (940 ml)	23.0 x 13.4 x 8.8	50	24		
GR1000BIO	1000 gr (1250 ml)	25.2 x 14.5 x 9.2	50	24		

2.2. SERIES SUPER



Code	Capacity (gr)	Dimensions (L x W x H cm)	Pieces / carton	cartons / pallet	€ / pcs	€ /pcs to buy a pallet
A21/SUPER-B5	500 gr	20.6 x 9.8 x 5.1 h	50	35		
A21/SUPER-C5	lid	21.7 x 10.6 x 0.6 h	100	35		
A21/SUPER-B75	750 gr	23.5 x 12.8 x 4.5 h	50	24		
A21/SUPER-C75	lid	24.8 x 13.9 x 0.6 h	100	24		
A21/SUPER-B10	1000 gr	25.9 x 15.1 x 5.0 h	50	20		
A21/SUPER-C10	lid	26.8 x 15.9 x 0.6 h	100	20		

2.3. SERIES DOMO



Code	Capacity (ml & gr)	dimensions (cm)	Pieces/ carton	Cartons/ pallet	€ / pcs	€ /pcs to buy a pallet
DOMO5-B	500 ml	14.9 x 7.7 x 5.5	140	8		
DOMO7-B	750 ml	17.4 x 8.0 x 7.1	100	8		
DOMO10R-B	1000 ml	20.4 x 9.5 x 7.6	60	8		
DOMO10-B	1200 ml	20.4 x 9.5 x 7.6	60	8		
DOMO15-B	1500 ml	22.4 x 10.4 x 7.7	50	8		

Complete with interiors and tissue | Inner insert and papers included

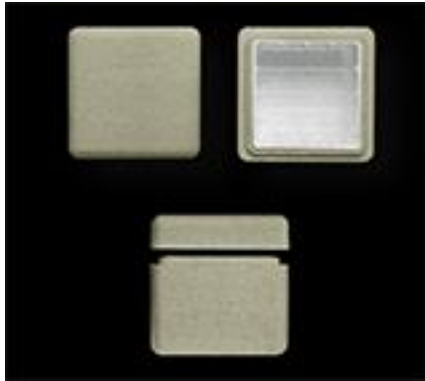
2.4. SERIES FIORE



Code	Capacity (ml & gr)	dimensions (cm)	Pieces/ carton	Cartons/ pallet	€ / pcs	€ /pcs to buy a pallet
FIO-05	500 gr	ø 15,0 x 5,4h	100	8		
FIO-07	750 gr	ø 15,5 x 6,0h	80	8		
FIO-10	1000 gr	ø 17,0 x 7,0h	60	8		
FIO-15	1500 gr	ø 19,5 x 8,0h	50	8		

With removable rPET inner case.

2.5. CUBE - CUBOTTO



CUBE

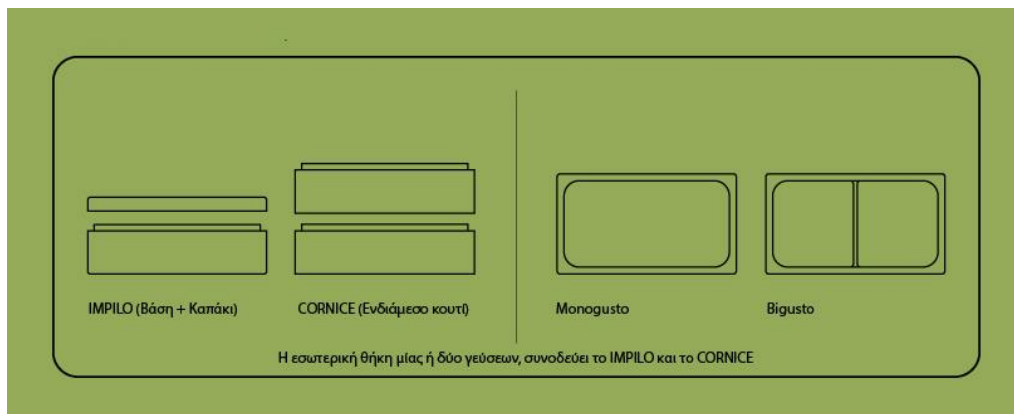


CUBOTTO

The cube has a removable rPET inner case.

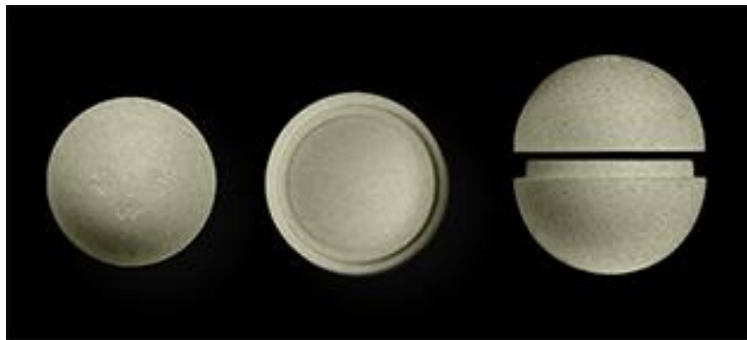
Code	Capacity (ml & gr)	dimensions (cm)	Pieces/ carton	Cartons/ pallet	€ / pcs	€ /pcs to buy a pallet
CUBE	500 ml	9.0 x 9.0 x 8.5	100	8		
CUBOTTO	500 ml	9.0 x 9.0 x 9.0	100	10		

2.6. IMPILO



Code	Capacity (ml & gr)	dimensions (cm)	Pieces/ carton	Cartons/ pallet	€ / pcs	€ /pcs to buy a pallet
IMPILO Monogusto	500 gr	17.0 x 8.8 x 4.7	50	20		
CORNICE Monogusto	500 gr	17.0 x 8.8 x 4.7	50	32		
IMPILO Bigusto	2 x 250 gr	17.0 x 8.8 x 4.7	50	20		
CORNICE Bigusto	2 x 250 gr	17.0 x 8.8 x 4.7	50	32		

2.7 SFERA



Code	Capacity (ml & gr)	dimensions (cm)	Pieces/ carton	Cartons/ pallet	€ / pcs	€ /pcs to buy a pallet
SFERA-07-B	375 ml	ø 8,8	60	24		

2.8 BARTOLO



Code	Capacity (ml & gr)	dimensions (cm)	Pieces/ carton	Cartons/ pallet	€ / pcs	€ /pcs to buy a pallet
BARTOLO 03-B	500 ml	9.0 x 9.0 x 9.8	40	24		

2.9 PASQUALINA



6 places



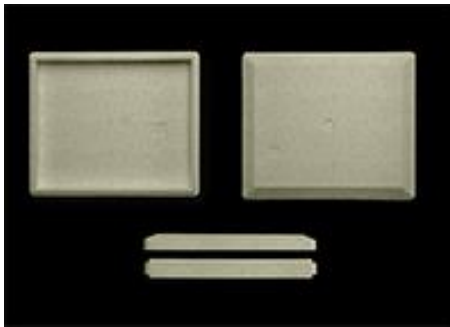
12 places



With removable rPET inner case.

Code	Capacity (ml & gr)	dimensions (cm)	Pieces/ carton	Cartons/ pallet	€ / pcs	€ /pcs to buy a pallet
PASQ05-B	500 gr - 6 places	20.0x13.0x 4.0h	65	8		
PASQ10-B	1000 gr - 12 places	27.0x20.0x 4.0h	32	8		

2.10 ALL ICE



Code	Capacity (ml & gr)	dimensions (cm)	Pieces/ carton	Cartons/ pallet	€ / pcs	€ /pcs to buy a pallet
ALICE02-B	8/10 sticks	28,8 x 24,1 x 2,8h	24	14		

3. EPS CONTAINERS for CAKES

3.1 SERIES D



Code	Type	Capacity (ml)	Dimensions (L x W x H cm)	Pieces/ carton	Cartons/ pallet	€ / pcs
A2/LAB06	Rectangular	1.820	19,5 x 11,2 x 8,5	100	4	
A2/LAB08	Rectangular	2.540	24,0 x 11,0 x 10,0	80	4	
A2/LAB10	Rectangular	3.000	31,3 x 11,2 x 8,5	70	4	
A1/04A	Square tall	3.138	17,0 x 17,0 x 11,0	24	16	
A1/04B	Square low	2.250	17,0 x 17,0 x 8,0	30	16	
A1/06A	Square tall	4.150	19,5 x 19,5 x 11,0	24	10	
A1/06B	Square low	3.000	19,5 x 19,5 x 8,0	30	10	
A1/08A	Square tall	4.990	21,5 x 21,5 x 11,0	24	8	
A1/08B	Square low	3.521	21,5 x 21,5 x 8,0	30	8	
A1/10A	Square tall	6.000	24,0 x 24,0 x 11,0	24	8	
A1/10B	Square low	4.380	24,0 x 24,0 x 8,0	30	8	
A1/12A	Square tall	7.340	26,5 x 26,5 x 11,0	32	4	
A1/12B	Square low	6.000	26,5 x 26,5 x 9,0	36	4	
A1/14	Square tall	11.500	30,0 x 30,0 x 13,0	18	4	

3.2 SERIES K:



Code	Type	Cake pieces	Dimensions (L x W x H cm)	Pieces/ carton	Cartons/ pallet	€ / pcs
440.110.026	Rectangular		26,0 x 17,0 x 10,0	48	4	
440.110.031	Rectangular		31,0 x 17,0 x 10,0	36	4	
440.110.036	Rectangular		36,0 x 17,0 x 10,0	36	4	
430.110.006	Square with inner membrane	6	17,2 x 17,2 x 9,6	60	8	
430.110.008	Square with inner membrane	8	20,2 x 20,2 x 9,6	60	8	
430.110.010	Square with inner membrane	10	23,2 x 23,2 x 9,6	60	6	
430.110.012	Square with inner membrane	12	25,4 x 25,4 x 9,6	60	4	

4. PS ICE CREAM BINS 2.5 – 10.0 L



PS CONTAINERS: -30 °C - +50 °C



2.5 Lt - 36,0 x 16,5 x 7,0 cm



2.5 Lt - 18,0 x 16,5 x 12,0 cm



4.75- 5 Lt - 36,0x16,5x11,8/12,2 cm



5 Lt - 36,0x25,0x8,0 cm



8 - 10 Lt - 36,0x25,0x12,0/15,0 cm



2.5 Lt - 17,0 x 15,0 x 13,0 cm



3.5 Lt - 36,0 x 16,5 x 8,0 cm
4 Lt - 25,0 x 15,0 x 15,0 cm



4.6 Lt - 36,0 x 16,5 x 11,8 cm
4.7 Lt - 33,0 x 16,5 x 13,0 cm



5 Lt - 34,0 x 15,0 x 13,0 cm
5 Lt - 36,0 x 16,5 x 11,5 cm



37,0 x 17,5 cm for 2.5 - 3.5 - 4.6 -
4.75 - 5 Lt



VR200 (6.000 ml)



SPATOLA 10SGC

We provide an additional discount of 20% from the original carton price (with only 5 exceptions), for

the purchase of more than 30 boxes (mixed) and **28% discount** from the initial box price for the purchase of **more than 40 cartons** (mixed).

code	capacity (ml)	Dimensions (cm)	Type / color	pieces / carton	cartons/ pallet	€/ ctn
310.110.25E	2.500	17,0 x 15,0 x 13,0	white	90	20	
310.200.25E	2.500	17,0 x 15,0 x 13,0	grey	90	20	
350.110.025	lid	17,5 x 15,0 x 0,5	white	90	48	
310.200.25M	2.500	18,0 x 16,5 x 12,0	grey	128	20	
310.190.25M	2.500	18,0 x 16,5 x 12,0	metalize	128	20	
350.040.25M	lid	19,0 x 19,0, x 0,5	Pet transp	256	24	
350.040.H40	lid	19,0 x 19,0, x 4,0	Pet transp	256	24	
310.110.040	4.000	25,0 x 15,0 x 15,0	white	120	20	
310.200.040	4.000	25,0 x 15,0 x 15,0	grey	120	20	
350.040.040	lid	25,0 x 15,0 x 1,0	transp	120	40	
350.110.040	lid	25,0 x 15,0 x 1,0	white	120	40	
310.200.047	4.700	33,0 x 16,5 x 13,0	grey	84	16	
310.190.047	4.700	33,0 x 16,5 x 13,0	metalize	84	16	
350.040.047	lid	33,0 x 16,5 x 1,0	Pet transp	84	42	
350.040.H60	lid	33,0 x 16,5 x 6,0	Pet transp	84	42	
310.110.50E	5.000	34,0 x 15,0 x 13,0	white	66	20	
310.200.50E	5.000	34,0 x 15,0 x 13,0	grey	66	20	
310.100.50E	5.000	34,0 x 15,0 x 13,0	black	66	20	
350.110.050	lid	34,0 x 15,0 x 0,5	white	66	48	
350.200.050	lid	34,0 x 15,0 x 0,5	grey	66	48	
350.040.050	lid	34,0 x 15,0 x 0,5	transp	66	48	
600000805B	4750	34,5 x 16,3 x 11,5	White	105	16	
600000805G	4750	34,5 x 16,3 x 11,5	grey	105	16	
600000805G	4750	34,5 x 16,3 x 11,5	metalize	105	16	
6000007205T	lid	35,1 x 17,1 x 1,1	Transpar. flat	420	16	
310.200.025BR	2.500	36,0 x 16,5 x 7,0	grey	240	16	
310.190.025BR	2.500	36,0 x 16,5 x 7,0	metalize	240	16	
310.200.35P	3.500	36,0 x 16,5 x 8,0	grey	72	16	
310.190.35P	3.500	36,0 x 16,5 x 8,0	metalize	72	16	
310.200.460	4.600	36,0 x 16,5 x 11,8	grey	108	24	
310.190.460	4.600	36,0 x 16,5 x 11,8	metalize	108	24	
310.040.460	4.600	36,0 x 16,5 x 11,8	Transp.	108	24	
310.110.475LN	4.750	36,0 x 16,5 x 11,8	white	140	24	
310.110.475PN	4.750	36,0 x 16,5 x 11,8	white	140	24	
310.190.475PN	4.750	36,0 x 16,5 x 11,8	metalize	140	24	
310.200.475LN	4.750	36,0 x 16,5 x 11,8	grey	140	24	
310.200.475PN	4.750	36,0 x 16,5 x 11,8	grey	140	24	
310.200.5IND	5.000	36,0 x 16,5 x 11,5	grey	84	16	
310.190.5IND	5.000	36,0 x 16,5 x 11,5	metalize	84	16	
310.200.05L	5.000	36,0 x 16,5 x 12,2	grey	132	24	
310.200.05P	5.000	36,0 x 16,5 x 12,2	grey	132	24	
310.190.05M	5.000	36,0 x 16,5 x 12,2	metalize	132	24	
351.000.0BR	lid	37,0 x 17,5 x 0,5	PS Neutro	140	24	
351.000.0BRP	lid	37,0 x 17,5 x 0,5	PS Neutro	140	24	
351.000.10BR	lid	37,0 x 17,5 x 10,0	PS Neutro	92	24	

351.000.4BR	lid	37,0 x 17,5 x 4,0	PS Neutro	100	24	
351.000.5BR	lid	37,0 x 17,5 x 5,0	PS Neutro	90	24	
351.000.6BR	lid	37,0 x 17,5 x 6,0	PS Neutro	100	24	
351.000.7BR	lid	37,0 x 17,5 x 7,0	PS Neutro	100	24	
351.040.0BR	lid	37,0 x 17,5 x 0,5	PET transp	140	24	
351.040.10BR	lid	37,0 x 17,5 x 10,0	PET transp	92	24	
351.040.4BR	lid	37,0 x 17,5 x 4,0	PET transp	100	24	
351.040.5BR	lid	37,0 x 17,5 x 5,0	PET transp	90	24	
351.040.6BR	lid	37,0 x 17,5 x 6,0	PET transp	100	24	
351.040.7BR	lid	37,0 x 17,5 x 7,0	PET transp	100	24	
352.040.0BR	lid	37,0 x 17,5 x 1,0	PET transp	140	24	
310.200.05N	5.000	36,0 x 25,0 x 8,0	grey	120	16	
310.190.05N	5.000	36,0 x 25,0 x 8,0	metalize	120	16	
310.200.08N	8.000	36,0 x 25,0 x 12,0	grey	114	16	
310.190.08N	8.000	36,0 x 25,0 x 12,0	metalize	114	16	
310.200.10N	10.000	36,0 x 25,0 x 15,0	grey	100	16	
310.190.10N	10.000	36,0 x 25,0 x 15,0	metalize	100	16	
352.000.H04N	lid	37,0 x 26,0 x 4,0	PS Neutro	100	16	
352.000.H07N	lid	37,0 x 26,0 x 7,0	PS Neutro	90	16	
352.000.H10N	lid	37,0 x 26,0 x 10,0	PS Neutro	80	16	
352.040.H04N	lid	37,0 x 26,0 x 4,0	PET transp	100	16	
352.040.H07N	lid	37,0 x 26,0 x 7,0	PET transp	90	16	
352.040.H10N	lid	37,0 x 26,0 x 10,0	PET transp.	80	16	
VR200/245	6.000	Φ20 x 24.5h	white	66	16	
CR200	lid	Φ20	white	132	16	
10SGC	spatola	20,0 x 6,+handle 10,5	7 colors	1		

GENERAL COMMENTS ON ORDERING

PAYMENT WAY

For these goods, 100% of the amount is prepaid, based on a pre-invoice, upon assignment of the order.

TRANSPORTATION

The prices are EXW Thessaloniki Greece or Sofia Bulgaria.

For a **minimum quantity of one pallet** we can organize the transport in each country in Europe.

For a **minimum amount of a container 40'** we can arrange transportation to any country in the world. In this case, please contact us for special prices.

ELLADA PACK team

www.ellada-pack.com | europe@ellada-pack.com