



## PRODUCT LIST 2023

### STAND UP (DOYPACK) BAGS – FLAT BOTTOM – SIDE GUSSETED BAGS

#### MINIMUM QUANTITY

##### Unprinted pouches of each category:

The minimum order quantity is one carton per dimension.

##### Branded pouches of each category:

The minimum order quantity is 1,000 pieces per dimension.

For all bags with the code prefix E, the minimum purchase quantity is one carton per dimension.

For cartons containing 500 or 750 pieces, the minimum quantity is 2 boxes.

For cartons containing 300 pieces, the minimum quantity is 4 boxes.

At the beginning of each product description (on individual pages), the minimum print quantity for that product is indicated.

The minimum order quantity for printing a full coverage pouch or making a new dimension (for 2 to 20kg) is 500kg per dimension.

#### DISCOUNTS

For unprinted sachets and for a purchase quantity of more than 4 cartons, the following discounts apply:

Cartons	Discount
5 to 8	7.0 %
9 to 19	12.0 %
20 +	17.0 %

The above discounts apply only to the unprinted ready-made pouches.

## A. DOYPACK ZIPPER BAGS

### A1. WHITE MAT (soft touch)



**Material:** MAT-OPP20 + MET-PET12 + PE(white)100

**Minimum purchase quantity:** This is **one carton per dimension**.

**Minimum quantity for printing on a stock pouch:** For the bags of this category, the minimum printing quantity is **1.000 pieces per dimension**.

Code	Roasted (gr)	Coffee bean (gr)	Volume (ml)	Dimensions (cm)	Pieces/ carton	Carton's weight (kg)
I-1118-WMOPP	100	80	250	11 x 18,5 + (2x3,5)	1.000	5.5
I-1322-WMOPP	250	220	500	13 x 22,5 + (2x4)	1.000	9.0
I-1627-WMOPP	500	390	750	16 x 27 + (2x4,5)	500	6.5

**For a larger quantity purchase, see the relevant discount on the first page!**

### A2. KRAFT BROWN/ALUMINUM



**Material:** Kraft50+ ALU9 + CPP60

**Minimum purchase quantity:** This is **one carton per dimension**.

**Minimum quantity for printing on a stock pouch:** For the bags of this category, the minimum printing quantity is **1.000 pieces per dimension**.

Code	Roasted (gr)	Coffee bean (gr)	Volume (ml)	Dimensions (cm)	Pieces/ carton	Carton's weight (kg)
I-8145-B	50	40	100	8,5 x 14,5 + (2x2,5)	1.000	4.5
I-1118-B	100	80	250	11 x 18,5 + (2x3,5)	1.000	7.5
I-1322-B	250	220	500	13 x 22,5 + (2x4)	1.000	10.5
I-1627-B	500	390	750	16 x 27 + (2x4,5)	500	7.5
I-1829-B	800	570	1.000	18 x 29 + (2x4,5)	500	9
I-2131-B	1.000	700	1.800	21 x 31 + (2x5)	500	11.5
I-2534-B	1.500	1.200	3.000	25 x 34 + (2x6.5)	500	15

**For a larger quantity purchase, see the relevant discount on the first page!**

### A3. KRAFT BROWN/ALUMINUM



**Material:** Kraft50+ ALU9 + CPP60

**Minimum purchase quantity:** This is one carton per dimension.

**Minimum quantity for printing on a stock pouch:** For the bags of this category, the minimum printing quantity is 1.000 pieces per dimension.

Code	Roasted (gr)	Coffee bean (gr)	Volume (ml)	Dimensions (cm)	Pieces/ carton	Carton's weight (kg)
I-8145-W	50	40	100	8,5 x 14,5 + (2x2,5)	1.000	4.5
I-1118-W	100	80	250	11 x 18,5 + (2x3,5)	1.000	7.5
I-1322-W	250	220	500	13 x 22,5 + (2x4)	1.000	10.5
I-1627-W	500	390	750	16 x 27 + (2x4,5)	500	7.5
I-1829-W	800	570	1.000	18 x 29 + (2x4,5)	500	9
I-2131-W	1.000	700	1.800	21 x 31 + (2x5)	500	11.5
I-2534-W	1.500	1.200	3.000	25 x 34 + (2x6.5)	500	15

**For a larger quantity purchase, see the relevant discount on the first page!**

### A4. KRAFT with WINDOW



**Material:** 45KRAFT + 12PET + 60CPP

**Minimum purchase quantity:** This is one carton per dimension.

**Minimum quantity for printing on a stock pouch:** For the bags of this category, the minimum printing quantity is 1.000 pieces per dimension.

Code	Roasted (gr)	Coffee bean (gr)	Volume (ml)	Dimensions (cm)	Pieces/ carton	Carton's weight (kg)
E-8145-BW	50	40	100	8,5 x 14,5 + (2x2,5)	3.000	13.5
E-1118-BW	100	80	250	11 x 18,5 + (2x3,5)	2.000	13
E-1322-BW	250	220	500	13 x 22,5 + (2x3.5)	2.000	18
E-1627-BW	500	390	750	16 x 27 + (2x4)	1.000	13
E-1829-BW	800	570	1.000	18 x 29 + (2x4,5)	1.000	16
E-2030-BW	1.000	700	1.800	20 x 30 + (2x5)	1.000	18
E-2534-BW	1.500	1.200	3.000	25 x 34 + (2x6)	500	13

**For a larger quantity purchase, see the relevant discount on the first page!**

## A5. WHITE KRAFT with WINDOW



**Material:** 50KRAFT + 12PET + 60CPP

**Minimum purchase quantity:** This is one carton per dimension.

**Minimum quantity for printing on a stock pouch:** For the bags of this category, the minimum printing quantity is 1.000 pieces per dimension.

Code	Roasted (gr)	Coffee bean (gr)	Volume (ml)	Dimensions (cm)	Pieces/ carton	Carton's weight (kg)
E-8145-WW	50	40	100	8,5 x 14,5 + (2x2,5)	3.000	13
E-1118-WW	100	80	250	11 x 18,5 + (2x3,5)	2.000	11
E-1322-WW	250	220	500	13 x 22,5 + (2x3,5)	2.000	18
E-1627-WW	500	390	750	16 x 27 + (2x4)	1.000	13
E-1829-WW	800	570	1.000	18 x 29 + (2x4,5)	1.000	16
E-2030-WW	1.000	700	1.800	20 x 30 + (2x5)	1.000	18
I-2534-WW	1.500	1.200	3.000	25 x 34 + (2x6,5)	500	14.5

**For a larger quantity purchase, see the relevant discount on the first page!**

## A6. KRAFT with BIG WINDOW



**Material:** 50KRAFT + 40 OPP

**Minimum purchase quantity:** This is one carton per dimension.

**Minimum quantity for printing on a stock pouch:** For the bags of this category, the minimum printing quantity is 1.000 pieces per dimension.

Code	Roasted (gr)	Coffee bean (gr)	Volume (ml)	Dimensions (cm)	Pieces/ carton	Carton's weight (kg)
E-1118-BBW	100	80	250	11 x 18,5 + (2x3,5)	2.000	11.0
E-1322-BBW	250	220	500	13 x 22,5 + (2x4)	2.000	14.0
E-1627-BBW	500	390	750	16 x 27 + (2x4,5)	2.000	22.0
E-1829-BBW	800	570	1.000	18 x 29 + (2x4,5)	1.000	13.5
E-2030-BBW	1.000	700	1.800	20 x 30 + (2x5,0)	1.000	24.0

**For a larger quantity purchase, see the relevant discount on the first page!**

## A7. MATTE/ALUMINUM (White - WMAT, Black - BLMAT and Gold - GOMAT)



Material : 20MAT-OPP+8ALU+(80-100)PE (for black) & 12MAT-PET+8ALU+(80-100)PE for the others

The minimum order quantity is 1 carton/size.

Minimum quantity for printing on a stock pouch: For pouches of this category, the minimum amount of printing is the number of pieces corresponding to one carton per dimension.

Code	Roasted (gr)	Coffee bean (gr)	Volume (ml)	Dimensions (cm)	Pieces/ carton	Carton's weight (kg)
E-8145-XXMAT	50	40	100	8,5 x 14,5 + (2x2,5)	3.000	18
E-1118-XXMAT	100	80	250	11 x 18,5 + (2x3,5)	2.000	14
E-1322-XXMAT	250	220	500	13 x 22,5 + (2x3,5)	2.000	19
E-1627-XXMAT	500	390	750	16 x 27 + (2x4)	1.000	15
E-2030-XXMAT	1.000	700	1.800	20 x 30 + (2x5)	1.000	21

**For a larger quantity purchase, see the relevant discount on the first page!**

## A8. GLOSSY/ALUMINUM (Black - BLGLOS and Gold - GOGLOS)



Material : 12PET + 8ALU + (80-100)PE

The minimum order quantity is 1 carton/size.

Minimum quantity for printing on a stock pouch: For pouches of this category, the minimum amount of printing is the number of pieces corresponding to one carton per dimension.

Code	Roasted (gr)	Coffee bean (gr)	Volume (ml)	Dimensions (cm)	Pieces/ carton	Carton's weight (kg)
E-8145-XXGLOS	50	40	100	8,5 x 14,5 + (2x2,5)	3.000	14
E-1118-XXGLOS	100	80	250	11 x 18,5 + (2x3,5)	2.000	14
E-1322-XXGLOS	250	220	500	13 x 22,5 + (2x3,5)	2.000	19
E-1627-XXGLOS	500	390	750	16 x 27 + (2x4)	1.000	15
E-2030-XXGLOS	1.000	700	1.800	20 x 30 + (2x5)	1.000	21

**For a larger quantity purchase, see the relevant discount on the first page!**

## A9. 100% TRANSPARENT



**Material:** 12PET + (70-120)PE

**Minimum purchase quantity:** This is **one carton per dimension**.

**Minimum quantity for printing on a stock pouch:** For the bags of this category, the minimum printing quantity is **1.000 pieces per dimension**.

Code	Roasted (gr)	Coffee bean (gr)	Volume (ml)	Dimensions (cm)	Pieces/ carton	Carton's weight (kg)
E-8145-TR	50	40	100	8,5 x 14,5 + (2x2,5)	3.000	10.5
E-1118-TR	100	80	250	11 x 18,5 + (2x3,5)	3.000	11
E-1322-TR	250	220	500	13 x 22,5 + (2x4)	2.500	9
E-1627-TR	500	390	750	16 x 27 + (2x4,5)	1.500	6.5
E-1829-TR	800	570	1.000	18 x 29 + (2x4,5)	1.500	7.5
E-2030-TR	1.000	700	1.800	20 x 30 + (2x5)	1.500	11
I-2534-TR	1.500	1.200	3.000	25 x 34 + (2x6,5)	500	14.5

**For a larger quantity purchase, see the relevant discount on the first page!**

## A10. 100% TRANSPARENT JAR type



**Material:** 12PET + 60CPP

**Minimum purchase quantity:** This is **one carton per dimension**.

**Minimum quantity for printing on a stock pouch:** For pouches of this category, the minimum amount of printing is the number of pieces corresponding to one carton per dimension.

Code	Roasted (gr)	Coffee bean (gr)	Volume (ml)	Dimensions (cm)	Pieces/ carton	Carton's weight (kg)
E-1118-JAR	125	100	250	11 x 18,5 + (2x2,2)	3.000	11
E-1522-JAR	300	250	625	15,5 x 22 + (2x3,3)	2.500	9
E-1727-JAR	600	500	1.250	17,5 x 27 + (2x3,8)	1.250	6.5
E-2130-JAR	1.200	1.000	2.500	21,5 x 30 + (2x3,8)	1.000	11

**For a larger quantity purchase, see the relevant discount on the first page!**

## A11. SILVER METALIZED / TRANSPARENT



**Material:** 12PET(Front) / 12 MET-PET(Back) + 60CPP

**Minimum purchase quantity:** This is one carton per dimension.

**Minimum quantity for printing on a stock pouch:** For the bags of this category, the minimum printing quantity is 1.000 pieces per dimension.

Code	Roasted (gr)	Coffee bean (gr)	Volume (ml)	Dimensions (cm)	Pieces/carton	Carton's weight (kg)
E-8145-SITR	50	40	100	8,5 x 14,5 + (2x2,5)	3.000	8
E-1118-SITR	100	80	250	11 x 18,5 + (2x3,5)	3.000	14
E-1322-SITR	250	220	500	13 x 22,5 + (2x3,5)	2.500	15
E-1627-SITR	500	390	750	16 x 27 + (2x4)	1.500	13
E-1829-SITR	800	570	1.000	18 x 29 + (2x4,5)	1.500	15
E-2030-SITR	1.000	700	1.800	20 x 30 +(2x5)	1.500	17

**For a larger quantity purchase, see the relevant discount on the first page!**

## A12. GOLD METALLIZED / TRANSPARENT



**Material:** 12PET(Front) / 12 MET-PET(Back) + 60CPP

**The minimum order quantity is 1 carton/size.**

**Minimum quantity for printing on a stock pouch:** For pouches of this category, the minimum amount of printing is the number of pieces corresponding to one carton per dimension.

Code	Roasted (gr)	Coffee bean (gr)	Volume (ml)	Dimensions (cm)	Pieces/carton	Carton's weight (kg)
E-8145-GT	50	40	100	8,5 x 14,5 + (2x2,5)	3.000	8
E-1118-GT	100	80	250	11 x 18,5 + (2x3,5)	2.500	14
E-1322-GT	250	220	500	13 x 22,5 + (2x3,5)	2.500	14
E-1627-GT	500	390	750	16 x 27 + (2x4)	1.500	13
E-2030-GT	1.000	700	1.800	20 x 30 +(2x5)	1.500	17

**For a larger quantity purchase, see the relevant discount on the first page!**

### A13. ALUMINUM POUCHES



**Material:** PET12 + ALU9 + (60-100)PE

**Minimum purchase quantity:** This is **one carton per dimension**.

**Minimum quantity for printing on a stock pouch:** For the bags of this category, **the minimum printing quantity is 1.000 pieces per dimension**.

Code	Roasted (gr)	Coffee bean (gr)	Volume (ml)	Dimensions (cm)	Pieces/ carton	Carton's weight (kg)
I-8145-ALU	50	40	100	8,5 x 14,5 + (2x2,5)	1.000	4
I-1118-ALU	100	80	250	11 x 18,5 + (2x3,5)	1.000	6.5
I-1322-ALU	250	220	500	13 x 22,5 + (2x4)	1.000	9.5
I-1627-ALU	500	390	750	16 x 27 + (2x4,5)	500	7.5
I-1829-ALU	800	570	1.000	18 x 29 + (2x4,5)	500	9
I-2131-ALU	1.100	800	1.900	21 x 31 + (2x5)	500	11.5
I-2534-ALU	1.500	1.200	3.000	25 x 34 + (2x6.5)	500	15

**For a larger quantity purchase, see the relevant discount on the first page!**



## B. FLAT BOTTOM POUCHES with/without ZIPPER

### B1. BROWN WINDOWED KRAFT FLAT BOTTOM BAGS without zipper



Description of construction material: Kraft50 + PET12 + CPP60 (WITHOUT zip)

Minimum purchase quantity: This is one carton per dimension.

Minimum quantity for printing on a stock pouch: For the bags of this category, the minimum printing quantity is 1.000 pieces per dimension.

Code	Roasted (gr)	Coffee bean (gr)	Volume (ml)	Dimensions (cm)	Pieces / carton
FB-1023-BW	250	200	500	10 x 23 + (2x3.5)	500
FB-1128-BW	500	400	1.000	11 x 28 + (2x4)	500
FB-1435-BW	1.000	800	2.000	14 x 35 + (2x4.8)	500

**For a larger quantity purchase, see the relevant discount on the first page!**

### B2. WHITE WINDOWED KRAFT FLAT BOTTOM BAGS without zipper



Description of construction material: Kraft50 + PET12 + CPP60 (WITHOUT zip)

Minimum purchase quantity: This is one carton per dimension.

Minimum quantity for printing on a stock pouch: For the bags of this category, the minimum printing quantity is 1.000 pieces per dimension.

Code	Roasted (gr)	Coffee bean (gr)	Volume (ml)	Dimensions (cm)	Pieces / carton
FB-1023-WW	250	200	500	10 x 23 + (2x3.5)	500
FB-1128-WW	500	400	1.000	11 x 28 + (2x4)	500
FB-1435-WW	1.000	800	2.000	14 x 35 + (2x4.8)	500

**For a larger quantity purchase, see the relevant discount on the first page!**

### B3. KRAFT METALLIC BAGS with/without POCKET ZIPPER – BARRIER BAGS



Description of construction material: Kraft50 + PET12 + CPP60 (WITHOUT zip)

Minimum purchase quantity: This is **one carton per dimension**.

Minimum quantity for printing on a stock pouch: For the bags of this category, the minimum printing quantity is **1.000 pieces per dimension**.

Code	zipper	Roasted (gr)	Coffee bean (gr)	Volume (ml)	Dimensions (cm)	Pieces/ carton
FB-1023-B	NO	250	200	500	10 x 23 + (2x3.5)	500
FB-1128-B	NO	500	400	1.000	11 x 28 + (2x4)	500
FB-1435-B	NO	1.000	800	2.000	14 x 35 + (2x4.8)	500
FB-1123-BZ	YES	250	200	500	11.5 x 23 + (2x4)	500
FB-1128-BZ	YES	500	400	1.000	11.5 x 28 + (2x4)	500
FB-1437-BZ	YES	1.000	800	2.000	14 x 37 + (2x4.8)	500

**For a larger quantity purchase, see the relevant discount on the first page!**

### B4. MATTE BLACK (BL), WHITE (W), BRONZE (BR) pouches with/without ZIPPER



Description of construction material: 12MAT-PET + 12MET-PET + (90-110)PE

Minimum purchase quantity: This is **one carton per dimension**.

For STOCK pouches of this category, the minimum amount of printing is **one carton for the small size and 2 cartons for the medium and large size**.

Code	zipper	Roasted (gr)	Coffee bean (gr)	Volume (ml)	Dimensions (cm)	Pieces/ carton
FB-1120-XXMAT	NO	250	200	500	11 x 20 + (2x8)	1.000
FB-1226-XXMAT	NO	500	400	1.000	12.5 x 26 + (2x8)	750
FB-1435-XXMAT	NO	1.000	800	2.000	14 x 35 + (2x9.5)	500
FB-1121-XXMATZIP	YES	250	200	500	11.5 x 21.5 + (2x8)	1.000
FB-1227-XXMATZIP	YES	500	400	1.000	12.5 x 27.5 + (2x8)	750
FB-1436-XXMATZIP	YES	1.000	800	2.000	14 x 36 + (2x9.5)	500

**For a larger quantity purchase, see the relevant discount on the first page!**

**B5. GLOSSY BLACK (BL) , SILVER (SI), BRONZE (BR) pouches with/without ZIPPER**



**Description of construction material:** 12PET + 12MET-PET + (90–110)PE

**Minimum purchase quantity:** This is one carton per dimension.

For STOCK pouches of this category, the minimum amount of printing is one carton for the small size and 2 cartons for the medium and large size.

Code	zipper	Roasted (gr)	Coffee bean (gr)	Volume (ml)	Dimensions (cm)	Pieces/ carton
FB-1120-XXGLOS	NO	250	200	500	11 x 20 + (2x8)	1.000
FB-1226-XXGLOS	NO	500	400	1.000	12.5 x 26 + (2x8)	750
FB-1435-XXGLOS	NO	1.000	800	2.000	14 x 35 + (2x9.5)	500
FB-1121-XXGLOSZIP	YES	250	200	500	11.5 x 21.5 + (2x8)	1.000
FB-1227-XXGLOSZIP	YES	500	400	1.000	12.5 x 27.5 + (2x8)	750
FB-1436-XXGLOSZIP	YES	1.000	800	2.000	14 x 36 + (2x9.5)	500

**For a larger quantity purchase, see the relevant discount on the first page!**

**B6. MATTE WHITE OPP zipper bags (aluminum free)**



**Material:** MAT-OPP20 + MET-PET12 + PE(white)100

**Minimum purchase quantity:** This is one carton per dimension.

**Minimum quantity for printing on a stock pouch:** For the bags of this category, the minimum printing quantity is 1.000 pieces per dimension.

Code	Roasted (gr)	Coffee bean (gr)	Volume (ml)	Dimensions (cm)	Pieces/ carton
FB-I-1123-WMOPPZIP	250	200	500	11.5 x 23.0 + (2x4)	500
FB-I-1227- WMOPPZIP	500	400	1.000	11.5 x 28.0 + (2x4)	500
FB-I-1437- WMOPPZIP	1.000	800	2.000	14 x 37 + (2x4.8)	500

**For a larger quantity purchase, see the relevant discount on the first page!**

## C. SIDE GUSSETED coffee pouches (100 gr to 2 Kg)

### C1. KRAFT/ALUMINUM gusseted bags



**Material:** 48KRAFT + 12MET-PET + 8ALU + (80-110)PE

**Minimum purchase quantity:** This is one carton per dimension.

**Minimum quantity for printing on a stock pouch:** For the bags of this category, the minimum printing quantity is 1.000 pieces per dimension.

Code	Roasted (gr)	Coffee bean (gr)	Volume (ml)	Dimensions (cm)	Pieces/ carton	Carton's weight (kg)
SG-7520-B	50	40	100	7,5 x 20 + 4	2.000	15
SG-1025-B	100	80	250	10 x 25 + 6	1.500	19
SG-1034-B	250	220	500	10 x 34 + 6	1.000	17
SG-1240-B	400	350	650	12.5 x 40 + 8	750	19
SG-1846-B	500	390	750	18 x 46 + 9	300	11

**For a larger quantity purchase, see the relevant discount on the first page!**

### C2. MATTE/ALUMINUM pouches - BLACK (BL) & WHITE (W)



**Material:** 12PET+8ALU+(80-100)PE for the white & 20MAT-OPP+8ALU+(80-100)PE for the black one.

**Minimum purchase quantity:** This is one carton per dimension.

**Minimum quantity for printing on a stock pouch:** For pouches of this category, the minimum amount of printing is 1.000 pieces per dimension with the exception of the dimension 12.5 x 40 cm, for which the minimum quantity is 2 cartons (1.500 pieces).

Code	Roasted (gr)	Coffee bean (gr)	Volume (ml)	Dimensions (cm)	Pieces/ carton	Carton's weight (kg)
SG-7520-XXMAT	125	100	250	7.5 x 20 + (2x4)	2.000	13
SG-1025-XXMAT	300	250	625	10 x 25 + (2x6)	1.500	17
SG-1034-XXMAT	600	500	1250	10 x 34 + (2x6)	1.000	16
SG-1240-XXMAT	1200	1000	2500	12.5 x 40 + (2x8)	750	18

**For a larger quantity purchase, see the relevant discount on the first page!**

### C3. GLOSSY/ALUMINUM pouches - BLACK (BL), WHITE (W) & GOLD (GO)



**Description of construction material:** 12PET + 8ALU + (80, 90, 100 PE)

**Minimum purchase quantity:** This is **one carton per dimension**.

**Minimum quantity for printing on a stock pouch:** For pouches of this category, the minimum amount of printing is **1.000 pieces** per dimension with the **exception of the dimension 12.5 x 40 cm**, for which the minimum quantity is **2 cartons (1.500 pieces)**.

Code	Roasted (gr)	Coffee bean (gr)	Volume (ml)	Dimensions (cm)	Pieces/ carton	Carton's weight (kg)
SG-7520-XXGLOS	125	100	250	7.5 x 20 + (2x4)	2.000	13
SG-1025-XXGLOS	300	250	625	10 x 25 + (2x6)	1.500	17
SG-1034-XXGLOS	600	500	1250	10 x 34 + (2x6)	1.000	16
SG-1240-XXGLOS	1200	1000	2500	12.5 x 40 + (2x8)	750	18

**For a larger quantity purchase, see the relevant discount on the first page!**

### C4. TRANSPARENT pouches with square bottom



**Material:** 40 OPP

**Minimum purchase quantity:** This is **one carton per dimension**.

**Minimum quantity for printing on a stock pouch:** For pouches of this category, the minimum amount of printing is **one carton per dimension**.

Code	Length (cm)	Height (cm)	Gusset (cm)	Dimensions (cm)	Pieces/ carton
SG-6018-TR	6	18	4+4	6 x 18 + 4	5.000
SG-7521-TR	7.5	21	5+5	7.5 x 21 + 5	4.000
SG-8024-TR	8	24	5+5	8 x 24 + 5	3.000
SG-8028-TR	8	28	5+5	8 x 28 + 5	3.000
SG-10031-TR	10	31	7+7	10 x 31 + 7	2.500

**For a larger quantity purchase, see the relevant discount on the first page!**

## D. RECYCLABLE & BIODEGRADABLE Stand-Up & Flat Bottom Bags



### D1. 100% RECYCLABLE – ECOLOGICALLY EVOH DOYPACK pouches



White matte



Paper-look type



Transparent

#### D1.1 WHITE MATTE RECYCLABLE pouches with ZIP

**Material:** PE30/PE70 (evoh) - matte white

**Minimum purchase quantity:** This is one carton per dimension.

**Minimum quantity for printing on a stock pouch:** For the bags of this category, the minimum printing quantity is 1.000 pieces per dimension.

Code	Roasted (gr)	Coffee bean (gr)	Volume (ml)	Dimensions (cm)	Pieces/ carton	Carton's weight (kg)
I-8145-R.W	50	40	100	8,5 x 14,5 + (2x2,5)	1.000	4
I-1118-R.W	100	80	250	11 x 18,5 + (2x3,5)	1.000	6
I-1322-R.W	250	220	500	13 x 22,5 + (2x4)	1.000	8
I-1627-R.W	500	390	750	16 x 27 + (2x4,5)	500	6
I-1829-R.W	800	570	1.000	18 x 29 + (2x4,5)	500	7
I-2131-R.W	1.000	700	1.800	21 x 31 +(2x5)	500	9

For a larger quantity purchase, see the relevant discount on the first page!

## D1.2 BROWN "PAPER LOOK" RECYCLABLE pouches with ZIP

Material: PE30/PE70 (evoh) - paper-look

Minimum purchase quantity: This is one carton per dimension.

Minimum quantity for printing on a stock pouch: For the bags of this category, the minimum printing quantity is 1.000 pieces per dimension.

Code	Roasted (gr)	Coffee bean (gr)	Volume (ml)	Dimensions (cm)	Pieces/ carton	Carton's weight (kg)
I-8145-R.P	50	40	100	8,5 x 14,5 + (2x2,5)	1.000	4
I-1118-R.P	100	80	250	11 x 18,5 + (2x3,5)	1.000	6
I-1322-R.P	250	220	500	13 x 22,5 + (2x4)	1.000	8
I-1627-R.P	500	390	750	16 x 27 + (2x4,5)	500	6
I-1829-R.P	800	570	1.000	18 x 29 + (2x4,5)	500	7
I-2131-R.P	1.000	700	1.800	21 x 31 +(2x5)	500	9

**For a larger quantity purchase, see the relevant discount on the first page!**

## D1.3 TRANSPARENT RECYCLABLE pouches with ZIP

Material: PE30/PE70 (evoh)

Minimum purchase quantity: This is one carton per dimension.

Minimum quantity for printing on a stock pouch: For the bags of this category, the minimum printing quantity is 1.000 pieces per dimension.

Code	Roasted (gr)	Coffee bean (gr)	Volume (ml)	Dimensions (cm)	Pieces/ carton	Carton's weight (kg)
I-8145-R.TR	50	40	100	8,5 x 14,5 + (2x2,5)	1.000	3.5
I-1118-R.TR	100	80	250	11 x 18,5 + (2x3,5)	1.000	5.5
I-1322-R.TR	250	220	500	13 x 22,5 + (2x4)	1.000	7.5
I-1627-R.TR	500	390	750	16 x 27 + (2x4,5)	500	5.5
I-1829-R.TR	800	570	1.000	18 x 29 + (2x4,5)	500	6.5
I-2131-R.TR	1.000	700	1.800	21 x 31 +(2x5)	500	8.5

**For a larger quantity purchase, see the relevant discount on the first page!**

## D2. BROWN KRAFT BARRIER POUCHES WITHOUT ZIP



**Material:** Kraft50/Monopaper (barrier)67

**Minimum purchase quantity:** This is **one carton per dimension**.

**Minimum quantity for printing on a stock pouch:** For the bags of this category, **the minimum printing quantity is 1.000 pieces per dimension**.

Code	Roasted (gr)	Coffee bean (gr)	Volume (ml)	Dimensions (cm)	Pieces/carton	Carton's weight (kg)
I-8145-BBIO	50	40	100	8,5 x 14,5 + (2x2,5)	1.000	4
I-1118-BBIO	100	80	250	11 x 18,5 + (2x3,5)	1.000	6
I-1322-BBIO	250	220	500	13 x 22,5 + (2x4)	1.000	9
I-1627-BBIO	500	390	750	16 x 27 + (2x4,5)	1.000	13
I-1829-BBIO	800	570	1.000	18 x 29 + (2x4,5)	1.000	15
I-2131-BBIO	1.000	700	1.800	21 x 31 +(2x5)	1.000	19

**For a larger quantity purchase, see the relevant discount on the first page!**

### D3. BIODEGRADABLE KRAFT BARRIER DOYPACK with ZIP



#### BROWN KRAFT BARRIER POUCHES

**Material:** Kraft(barrier)60 / Bio-Plastic50

**Minimum purchase quantity:** This is **one carton per dimension**.

**Minimum quantity for printing on a stock pouch:** For the bags of this category, **the minimum printing quantity is 1.000 pieces per dimension**.

Code	Roasted (gr)	Coffee bean (gr)	Volume (ml)	Dimensions (cm)	Pieces/carton	Carton's weight (kg)
I-8145-BBIOZ	50	40	100	8,5 x 14,5 + (2x2,5)	500	3.5
I-1118-BBIOZ	100	80	250	11 x 18,5 + (2x3,5)	500	5.5
I-1322-BBIOZ	250	220	500	13 x 22,5 + (2x4)	500	9.0
I-1627-BBIOZ	500	390	750	16 x 27 + (2x4,5)	250	6.5
I-1829-BBIOZ	800	570	1.000	18 x 29 + (2x4,5)	250	7.5
I-2131-BBIOZ	1.000	700	1.800	21 x 31 +(2x5)	250	11.0
I-2534-BBIOZ	1.500	1.200	3.000	25 x 34 +(2x6.5)	250	14.5

**For a larger quantity purchase, see the relevant discount on the first page!**



## D4. I'M GREEN – High Barrier zipper pouches



### D4.1 BROWN KRAFT >65% biobased

**Material:** Kraft50/ high barrier PET12/PE70

**Minimum purchase quantity:** This is **one carton per dimension**.

**Minimum quantity for printing on a stock pouch:** For the bags of this category, the **minimum printing quantity is 1.000 pieces per dimension**.

Code	Roasted (gr)	Coffee bean (gr)	Volume (ml)	Dimensions (cm)	Pieces/ carton	Carton's weight (kg)
I-8145-BR.GR	50	40	100	8,5 x 14,5 + (2x2,5)	1.000	4.5
I-1118-BR.GR	100	80	250	11 x 18,5 + (2x3,5)	1.000	7.5
I-1322-BR.GR	250	220	500	13 x 22,5 + (2x4)	1.000	10.5
I-1627-BR.GR	500	390	750	16 x 27 + (2x4,5)	500	7.5
I-1829-BR.GR	800	570	1.000	18 x 29 + (2x4,5)	500	9.0
I-2131-BR.GR	1.000	700	1.800	21 x 31 +(2x5)	500	11.5

**For a larger quantity purchase, see the relevant discount on the first page!**

### D4.2 BLACK KRAFT >65% biobased

**Material:** Kraft50/ high barrier PET12/PE70

**Minimum purchase quantity:** This is **one carton per dimension**.

**Minimum quantity for printing on a stock pouch:** For the bags of this category, the **minimum printing quantity is 1.000 pieces per dimension**.

Code	Roasted (gr)	Coffee bean (gr)	Volume (ml)	Dimensions (cm)	Pieces/ carton	Carton's weight (kg)
I-8145-BL.GR	50	40	100	8,5 x 14,5 + (2x2,5)	1.000	4.5
I-1118-BL.GR	100	80	250	11 x 18,5 + (2x3,5)	1.000	7.5
I-1322-BL.GR	250	220	500	13 x 22,5 + (2x4)	1.000	10.5
I-1627-BL.GR	500	390	750	16 x 27 + (2x4,5)	500	7.5
I-1829-BL.GR	800	570	1.000	18 x 29 + (2x4,5)	500	9.0
I-2131-BL.GR	1.000	700	1.800	21 x 31 +(2x5)	500	11.5

**For a larger quantity purchase, see the relevant discount on the first page!**

## E. I'M GREEN – High Barrier FLAT BOTTOM Zipper Pouches

### E5.1 BROWN KRAFT >65% biobased



Material: Kraft50/ high barrier PET12/PE70

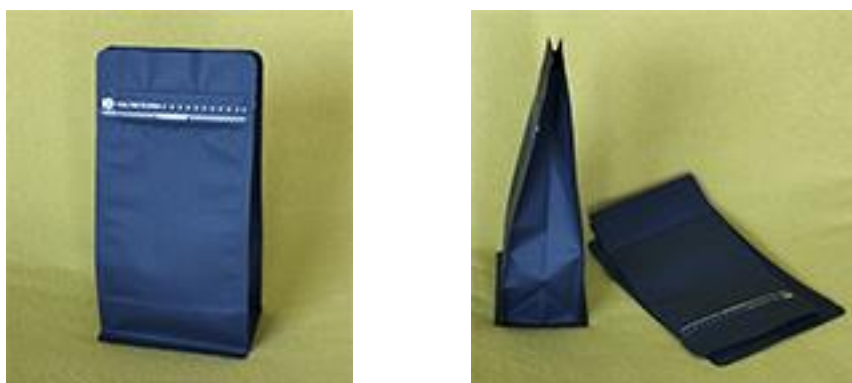
Minimum purchase quantity: This is one carton per dimension.

Minimum quantity for printing on a stock pouch: For the bags of this category, the minimum printing quantity is 1.000 pieces per dimension.

Code	Roasted (gr)	Coffee bean (gr)	Volume (ml)	Dimensions (cm)	Pieces/ carton
FB-1123-BR.GR	250	200	500	11.5 x 23 + (2x4)	500
FB-1128-BR.GR	500	400	1.000	11.5 x 28 + (2x4)	500
FB-1437-BR.GR	1.000	800	2.000	14 x 37 + (2x4.8)	500

**For a larger quantity purchase, see the relevant discount on the first page!**

### E5.2 BLACK KRAFT >65% biobased



Material: Kraft50/ high barrier PET12/PE70

Minimum purchase quantity: This is one carton per dimension.

Minimum quantity for printing on a stock pouch: For the bags of this category, the minimum printing quantity is 1.000 pieces per dimension.

Code	Roasted (gr)	Coffee bean (gr)	Volume (ml)	Dimensions (cm)	Pieces/ carton
FB-1123-BL.GR	250	200	500	11.5 x 23 + (2x4)	500
FB-1128-BL.GR	500	400	1.000	11.5 x 28 + (2x4)	500
FB-1437-BL.GR	1.000	800	2.000	14 x 37 + (2x4.8)	500

**For a larger quantity purchase, see the relevant discount on the first page!**

## BRANDED DOY-PACK BAGS



### INSTRUCTIONS

**Branded:** For the stock pouches, (**ready-made bags**), the available print options are Offset and Screen printing. These options depend on the design and the pouch you have chosen.

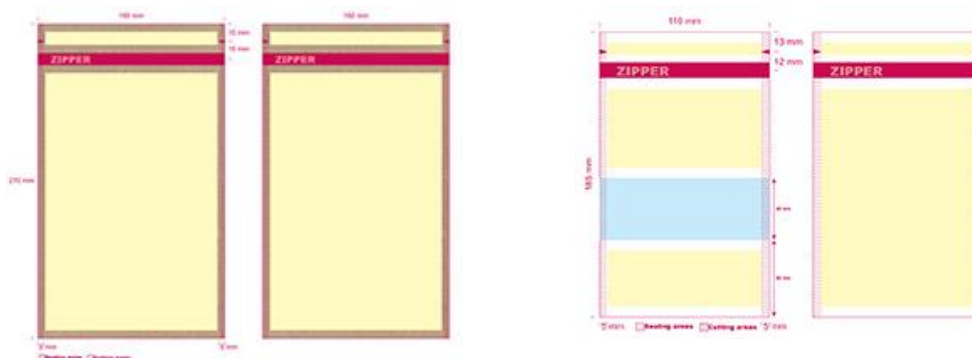
**Printed area:** It is what is defined by the yellow area in the gallery below!

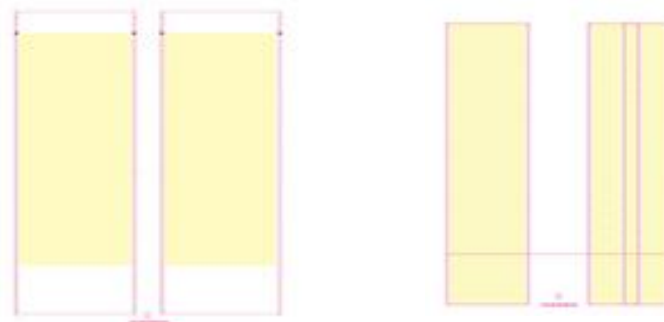
**Note:** The ready-made (stock) bags, of any type, **cannot be branded on the side and bottom.**

**The printing file** must be ai, eps or pdf vector file exported from Illustrator

**PAY ATTENTION!** For **matte and glossy stock pouches** and to get an excellent result, **we recommend** using up to two printing colors without a colored background.

**Valve:** Valve installation can be done on each pouch of each type (stand-up, flated, gusseted) at a cost of **0.050 €/piece** for the above minimum quantities.





## BRANDED POUCHES TABLE – EXPLANATIONS & PRICES

1. The **first column** includes the **printing colors per side** (2 + 1 colors, or 4 + 3 colors, etc.)
2. In all the other columns are the price in euros that we **must add to the prices of the unprinted bags** to obtain the final price.
3. **The following calculation values** apply to each category **EXCEPT** for the pouches of categories **A7, A8, A10, A12, B4, B5, C2, C3 and C4** as for printing on stock bags of these categories we add **0.045 euros/color/side** at the values of the corresponding tables.

### EXAMPLE

1. We want to print **1,000** or **9,000** pouches with code E-1118-BW (kraft with window). Unprinted, according to our list, costs **€ 0.096**. The printing colors will be **2 colors on one side and 1 color on the other side**, that is, we go to the **2+1** option in the first column of the table below.
2. For **2+1** color printing, the cost becomes  $0.096 + 0.116 = 0.212$  €/piece for the 1,000 pieces and  $0.096 + 0.082 = 0.178$  €/piece for **9,000 pieces**.

**TABLE OF ADDITIONAL PRICES for PRINTING**

colors/ side	<b>1.000 – 2.000</b> + €/pieces	<b>3.000 – 4.000</b> + €/pieces	<b>5.000 – 6.000</b> + €/pieces	<b>7.000 – 9.000</b> + €/pieces	<b>10.000 +</b> + €/pieces
1+0	0,053	0,044	0,041	0,039	0,038
1+1	0,106	0,088	0,082	0,078	0,076
2+0	0,062	0,049	0,044	0,042	0,040
<b>2+1</b>	<b>0,116</b>	0,094	0,085	<b>0,082</b>	0,078
2+2	0,126	0,099	0,088	0,084	0,080
3+0	0,073	0,055	0,047	0,044	0,042
3+1	0,127	0,099	0,088	0,084	0,080
3+2	0,138	0,104	0,091	0,086	0,082
3+3	0,146	0,109	0,094	0,088	0,083
4+0	0,084	0,059	0,050	0,046	0,043
4+1	0,136	0,104	0,091	0,086	0,082
4+2	0,145	0,109	0,094	0,088	0,083
4+3	0,156	0,114	0,098	0,090	0,085
4+4	0,165	0,119	0,100	0,092	0,086

If there are **different artworks** for the same dimension, the calculation is always done in the above way. So, for example, **for 6 different visuals of the same dimension**, the printing prices result from the column 5000-6000 pieces.

# LOYALTY PROGRAM NOM 5 & NOM 10

## Unbranded - Stand-Up, Flat Bottom & Side Gusseted pouches

### PROGRAM description

#### Non Members - NOM 5

Earn **5 points** with the purchase of each new carton.  
When you reach **100 points**, you get an extra carton.  
Completing **200 points** earns you a second carton.

#### Members - NOM 10

Earn **10 points** with the purchase of each new carton.  
When you reach **100 points**, you get an extra carton.  
Completing **200 points** earns you a second carton.

In each case the pouches will only be the **unprinted bags from our stock**.  
The offer is **valid from the date of the first order and is valid for 12 months**.  
**Earned points** will be listed on the invoice of each order.

You can become a member of the parent company, ELLADA PACK, by [filling in your details here](#).



### Pouches: Loyalty Program

#### no sign-in required

Earn 5 points with the purchase of each new carton.  
When you reach 100 points, you get an extra carton.  
Completing 200 points earns you a second carton.



#### MEMBERS only

Earn 10 points with the purchase of each new carton.  
When you reach 100 points, you get an extra carton.  
Registration on our parent website is required



## GENERAL COMMENTS ON ORDERING

### READY-MADE POUCHES - DELIVERY OF GOODS

Items that are in stock will be delivered **within one week after payment**, based on a price list, while those that are temporarily out of stock will be **delivered within three weeks** .

**For branded, personalized, pouches**, completion time is **5 weeks after artwork approval** (if printing on stock items) **and 8 weeks after artwork approval** if it is a **print with 100% coverage or a new dimension**.

**You can receive the goods free of charge**, according to the above, **from Thessaloniki Greece and Sandanski Bulgaria warehouses**.

**The invoice can be sent by email or together with the goods**.

### PRINTING ARCHIVE (in case of printing)

The printing file must be ai, eps or pdf vector file exported from **Adobe Illustrator**.

### PAYMENT WAY

For the **printed doypacks**, 50% of the amount is prepaid and the remaining 50% is paid upon completion and before the delivery of the goods.

For **unbranded pouches**, 100% of the amount is prepaid, based on a proforma-invoice, upon assignment of the order.

### TRANSPORTATION

The prices are EXW Thessaloniki Greece or Sandanski Bulgaria.

**ELLADA PACK team**

**[www.ellada-pack.com](http://www.ellada-pack.com) | [europe@ellada-pack.com](mailto:europe@ellada-pack.com)**